

## LT 2 LM 500



*Your Investment is never compromised with these outstanding features*

### Machine Features

- Powerful AC Spindle motor
- High speed 4000 rpm spindle
- Thermally stabilised spindle
- Linear motion Guideways
- 20 m/min rapid traverse rate
- Pre-tension ball screw support
- 100% ball bar tested
- Separate coolant tank-easy maintenance

### Standard Accessories

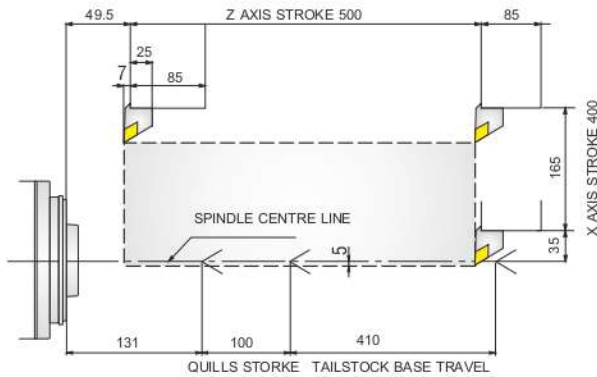
- AC spindle & axes drives
- LM guideways
- Heavy duty bi-directional turret
- Tailstock with live center
- Automatic centralized oil lubrication
- Drain line oil cooler
- Basic hydraulic system
- OD tool holder clamping block (8 nos)
- Boring bar holder (4 nos)
- Facing tool holder (2 nos)
- Set of sleeves
- Safety door interlock

### Optional Accessories

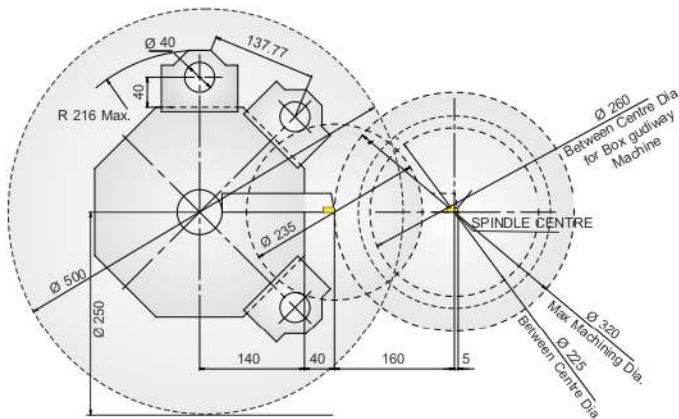
- AC unit for electricals
- Programmable quill
- 3 tier lamp
- Rigid tapping
- Voltage stabilizer
- Chip conveyor rear/side
- TPM - Trak productivity monitoring system
- LASER calibrated axes
- Parts catcher
- Bar feeder
- Tool touch probe

Fast on Site: All India post sales service

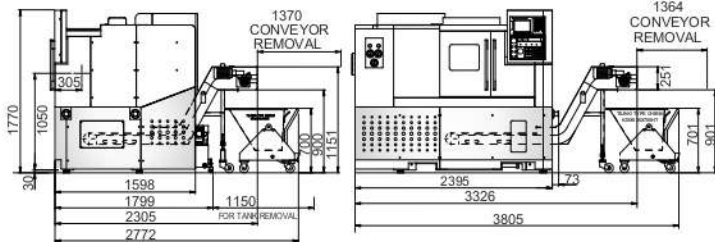
## Machining Range



## Interference Diagram



## Overall Views



## Specifications

## LT 2 LM 500

<b>Control System</b>	Fanuc Oi-Mate TD / Siemens 828D Basic T
<b>Capacity</b>	
Swing Over Bed	500 mm
Distance Between Centers	550 mm
Maximum Turning Dia	320 mm
Between Center Turning Dia	225 mm
Maximum Turning Length	500mm
<b>Spindle</b>	
Spindle Nose	A2-6
Bore Through Spindle	63 mm
Front Bearing Bore	100 mm
Maximum Bar Capacity	51 mm
Maximum Spindle speed	4000 rpm
Spindle Motor Power ( Fanuc / Siemens -15min/ Rating)	Fanuc-11 kW Siemens -13.5 kW
Spindle Motor Power (Continuous Rating )(F/S)	Fanuc - 7.5 kW / Siemens 9kW
Full Power Range (F/S)	Fanuc 1166 - 2625 rpm Siemens 875 - 2500 rpm
Standard Chuck Size	200*
<b>Axes</b>	
Type of Guideways	Linear motion Guideways
X-Axis Stroke	165 mm
Z-Axis Stroke	500 mm
X & Z Axes Rapid Rate	20 m/min.
<b>Tooling</b>	
Number of Tools Maximum	8 (12)
Boring Bar Dia Maximum	40 (32)mm
OD Turning Tool Size	25 x 25 (20x20)mm
<b>Tailstock</b>	
Tailstock Base Travel	410 mm
Tailstock Quill Travel	100 mm
Tailstock Quill Dia.	80 mm
Quill Taper	MT-4
<b>Hydraulic System</b>	
Hydraulic Pump Capacity	14 lpm
Hydraulic Power Pack Tank Capacity	45 litre
System Pressure	30 Kg/cm <sup>2</sup>
Coolant Tank Capacity	110 litre
<b>Overall Machine Dimensions</b> (L x W x H)	
	2395 x 1799 x 1770 mm
<b>Overall Weight</b> (Without Packing)	
	~ 3750 kg

\* With appropriate workholding

(F/S) - Fanuc/Siemens

Owing to continuous up-gradation of our products, the specification may change and to be reconfirmed at the time of ordering. Features shown may not be part of the standard equipment.

Manufactured by:

**ACE DESIGNERS LTD.**

Plant I - Plot No.7 & 8, II Phase, Peenya Industrial Area, Bangalore - 560 058, India

Tel : +91-80-2218 6700, Fax : +91-80-2218 6723, E-mail : info@acedesigners.co.in

INDIA-Marketed & Serviced by **Micromatic** www.acemicromatic.net

Ahmedabad +91 7925471145; Ambattur +91 98407 85521; Aurangabad +91 240 2552309; Bangalore +91 80 40200555; Belgaum +91 99800 02597; Bommasandra +91 80 27834836;

Chakan +91 2135 322002; Chennai +91 44 40440700; Coimbatore +91 422 4506183, 6588595; Delhi +91 11 22414232/ 42448095; Faridabad +91 129 4047000; Gurgaon +91 124 4745500 / 4745500;

Hyderabad +91 40 23070496; Indore +91 73899 39190, 73899 39191; Jamshedpur +91 657 6539931; Kolhapur +91 230 2460444, 2460123; Kolkata +91 33 26710158 / 2710100 / 033-64578825

Ludhiana +91 97791 28296; Mumbai +91 22 26861009/1976/7271/7272; Nasik +91 253 6610254; Pune +91 20 40712111/27479661/9662; Rajkot +91 281 6548369/2923048/3012775; Ranipet +91 4172 272732;

Rohtak +91 8295043311; Rudrapur +91 95570 30224, +91 97201 06532; Tambaram +91 44 22265531; Thane +91 22 25829062 Trichy +91 431 2443066

**INTERNATIONAL**

Germany +49 (0) 172 231 6688 Shanghai +86 (21) 586 650 31/32; Switzerland +41 32 652 58 41

Email: salesmmt@acemicromatic.com

