

SLC-16 LM 2S



Machine Features

- Powerful AC Spindle motor
- High speed 4000 rpm spindle
- Thermally stabilised spindle
- Linear motion Guideways
- 30 m/min rapid traverse rate
- Pre-tension ball screw support
- 100% ball bar tested
- Separate coolant tank-Easy maintenance

Standard Accessories

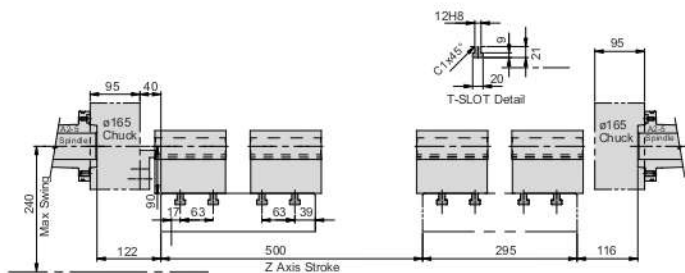
- AC spindle & axes drives
- Linear motion Guideways
- Automatic centralized oil lubrication
- Drain line oil cooler
- Basic hydraulic system
- OD tool holder clamping block (4 nos)
- Boring bar holder $\varnothing 32$ (2 nos)
- Set of sleeves
- Safety door interlock
- Radial tool holder - (2 nos)

Optional Accessories

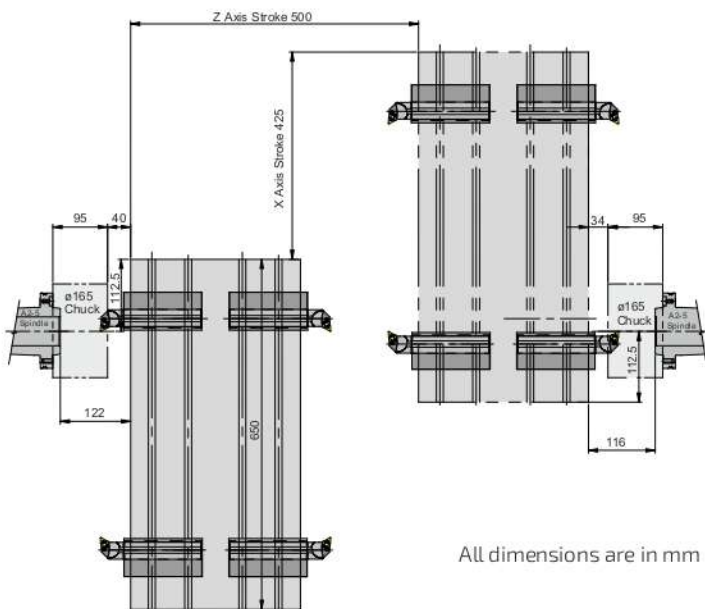
- AC unit for electricals
- 3 tier lamp
- Rigid tapping
- Voltage stabilizer
- Chip conveyor rear
- TPM - Trak productivity monitoring system
- Laser calibrated axes

Fast on Site: All India post sales service

Machining Range Diagram



Interference Diagram



Application Examples



Specifications

SLC - 16 LM 25

Control System	Fanuc
Capacity	
Swing Over Table	180 mm
Swing Over Carriage	480 mm
Maximum Cutting Dia ¹	150 mm
Maximum Cutting Length ²	100mm
Spindle	
Spindle Nose	A2-5 x 2
Bore Through Spindle	47 mm
Front Bearing Bore	80 mm
Maximum Bar Capacity ³	25 mm
Maximum Spindle speed ³	4000 rpm
Spindle Motor Power - Continuous Rating	5.5 kW
Spindle Motor Power - 15 min Rating	7.5 kW
Full Power Range	1333 - 4000 rpm
Standard Chuck Size	165 mm
Tooling	
Maximum No of Tools	Depends on Application
Boring Bar Dia Maximum	32 mm
OD Turning Tool Size	25 x 25 mm
Axes	
Type of Guideways	Linear motion
X-Axis Stroke	425mm
Z-Axis Stroke	500 mm
X & Z Axes Rapid Rate	30 m/min.
Hydraulic System	
Hydraulic Pump Capacity	12 lpm
Hydraulic Power Pack Tank Capacity	45 litre
System Pressure	30 Kg/cm ²
Coolant Tank Capacity	120 litre
Overall Machine Dimensions(L x W x H)	3000x 2500 x 1950 mm
Overall Weight (Without Packing)	~ 4000 kg

- 1.Refer machining range diagram
- 2.Refer Interference diagram
- 3.With appropriate work holding

Note: Owing to continuous up-gradation of our products, the specification may change and to be reconfirmed at the time of ordering. Features shown may not be part of the standard equipment.

Manufactured by:

ACE DESIGNERS LTD.

Plant I - Plot No.7 & 8, II Phase, Peenya Industrial Area, Bangalore - 560 058, India

Tel : +91-80-2218 6700, Fax : +91-80-2218 6723, E-mail : info@acedesigners.co.in

INDIA-Marketed & Serviced by **Micromatic** www.acemicromatic.net

Ahmedabad +91 7925471145; Ambattur +91 98407 85521; Aurangabad +91 240 2552309; Bangalore +91 80 40200555; Belgaum +91 99800 02597; Bommasandra +91 80 27834836;
Chakan +91 2135 322002; Chennai +91 44 40440700; Coimbatore +91 422 4506183, 6588595; Delhi +91 11 22414232/ 42448095; Faridabad +91 129 4047000; Gurgaon +91 124 4745500 / 4745500;
Hyderabad +91 40 23070496; Indore +91 73899 39190, 73899 39191; Jamshedpur +91 657 6539931; Kolhapur +91 230 2460444, 2460123; Kolkata +91 33 26710158 / 2710100 / 033-64578825
Ludhiana +91 97791 28296; Mumbai +91 22 26861009/1976/7271/7272; Nasik +91 253 6610254; Pune +91 20 40712111/27479661/9662; Rajkot +91 7698000728 Ranipet +91 4172 272732;
Rohtak +91 8295043311; Rudrapur +91 95570 30224, +91 97201 06532; Tambaram +91 44 22265531; Thane +91 22 25829062 Trichy +91 431 2443066

INTERNATIONAL

Germany +49 (0) 172 231 6688 Shanghai +86 (21) 586 650 31/32; Switzerland +41 32 652 58 41

Email: salesmmt@acemicromatic.com

